

CANON

J. Pachelbel (1653-1706)

Marimba

Redoblar $\text{♩} +$

◦ Derecha

• Izquierda

①

②

5 ③

9

11

13

17

18

19

20

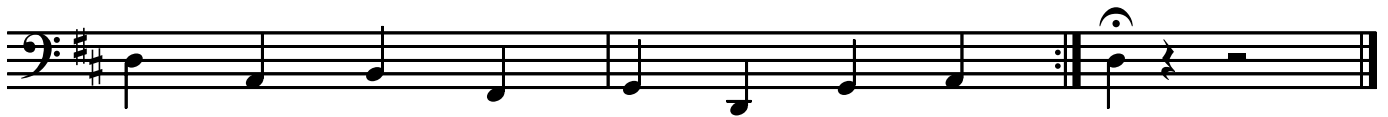
21

Canon - Pachelbel

Musical score for Canon in D major by Johann Pachelbel, measures 25-53. The score is written in treble clef with a key signature of two sharps (D major). The music features a complex rhythmic pattern of eighth and sixteenth notes, characteristic of the piece. The score includes various musical notations such as slurs, ties, and dynamic markings like *fr* (forzando). The piece concludes with a double bar line and a bass clef at the end of the final measure.

Canon - Pachelbel

Ostinato (durante toda la obra)
Comienza dos compases antes de la melodía.
Se repite 28 veces hasta el final.



Pieza originalmente compuesta para tres violines y bajo continuo..